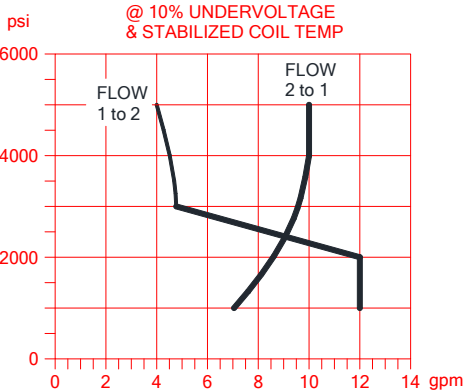


REVISION HISTORY					
REV	EWO	FACE	DESCRIPTION	DATE	R/E
-	003164	-	Part number change to LDK-DT13SDCN_224 was VPLDLKT-DT13SD1001	23-01-12	KDG

## POPPET VALVE PERFORMANCE



**Lynch**  
Lynch Fluid Controls Inc.

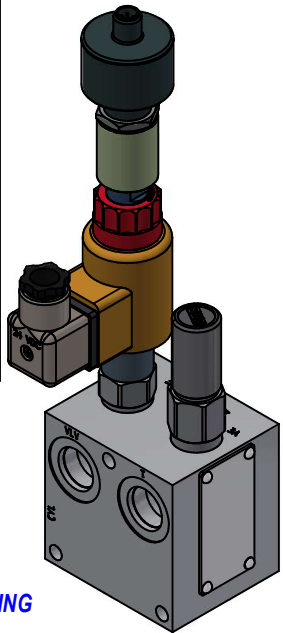
**PROPRIETARY NOTICE**  
THIS DRAWING DESCRIBES A PROPRIETARY PRODUCT OF LYNCH FLUID CONTROLS INC. WHICH MAY NOT BE REPRODUCED IN WHOLE OR IN PART NOR GIVEN TO A THIRD PARTY WITHOUT WRITTEN PERMISSION FROM LYNCH FLUID CONTROLS INC.

DATA INCH UNIT: 3RD ANGLE PROJECTION

DWG NO	LDK-DT13SDCN_224	REV	-
CUSTOMER	Lynch SVP		
TITLE	Load Lock Block Manifold Body, Sun T13-A, SAE-8		

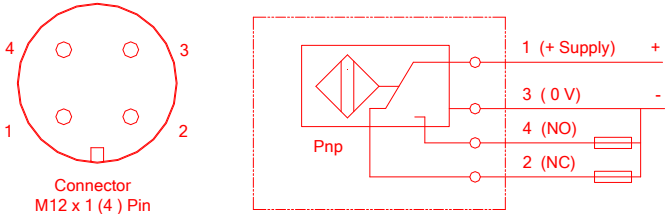
## SPECIFY RELIEF SETTING WHEN ORDERING

DESIGN INPUTS	
APPLICATION TYPE:	LOAD LOCK
MAX PUMP FLOW:	
MAX SYSTEM FLOW:	6 GPM
WORKING PRESSURE:	5000 PSI
PEAK PRESSURE:	
FLUID TYPE:	Hydraulic Mineral Oil
FLUID TEMPERATURE:	
FLUID SEALS:	BUNA
COIL TYPE:	DIN 43650-FORM A
COIL VOLTAGE:	24 VDC
CONNECTOR TYPE:	DIN 43650
SPECIAL FINISH:	BARE



D

### CONNECTOR DETAIL

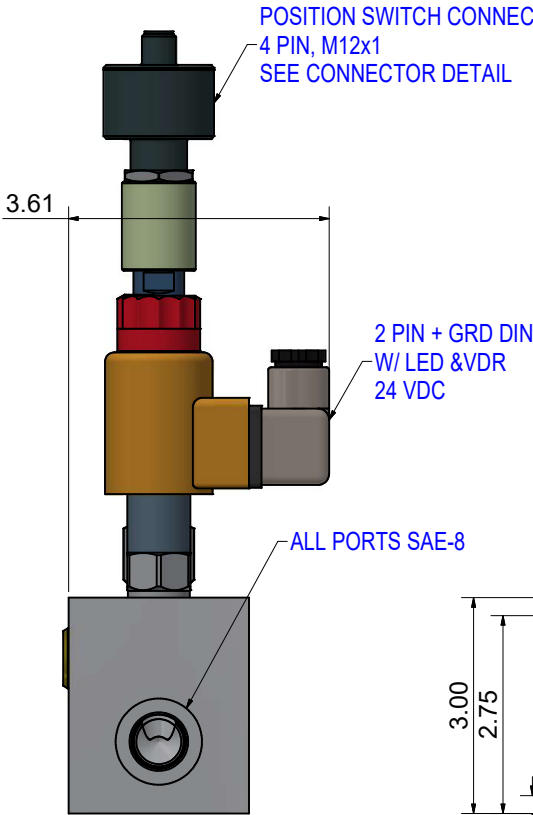
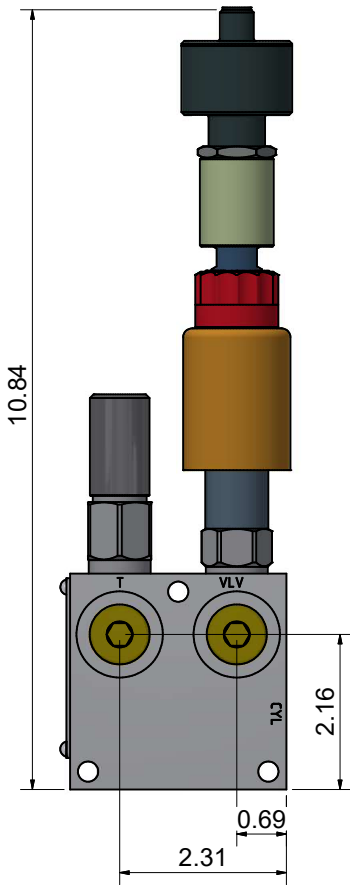


C

Δ

B

A



### FILTRATION

Recommended ISO level of Cleanliness 21/19/16 or Cleaner.  
Recommended minimum filtration level of 20 microns.  
For more detailed information see reference  
Hydac Filter Systems Contamination Handbook.  
<https://betterfit-us.hydac.com/wp-content/uploads/Contamination%20Handbook.pdf>

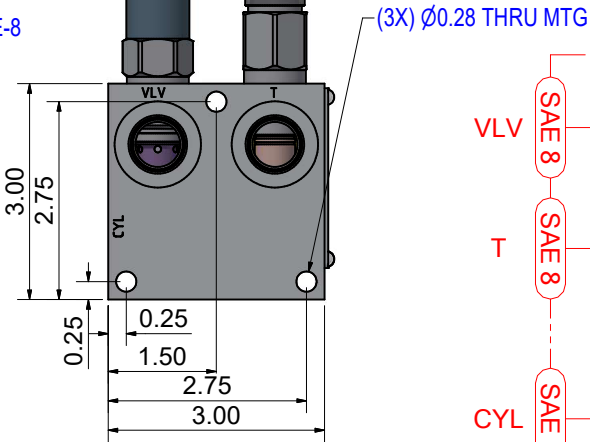
Conforming with the suggested filtration requirements may extend the life span of the equipment.  
Oil sample testing available upon request.

POSITION SWITCH CONNECTOR  
4 PIN, M12x1  
SEE CONNECTOR DETAIL

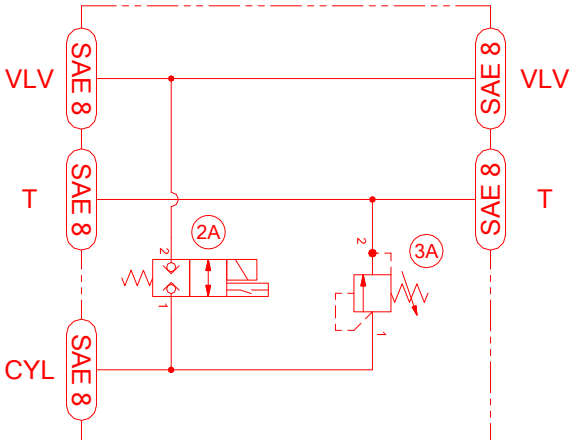
2-WAY POPPET VALVE  
W/ POSITION SWITCH  
NORMALLY CLOSED

SOLENOID COIL 24 VDC

DIRECT ACTING RELIEF VALVE  
W/ TAMPER RESISTANT CAP  
SPECIFY PRESSURE SETTING WHEN ORDERING



## SCHEMATIC



LYNCH FLUID CONTROLS INC. RESERVES THE RIGHT TO DISCONTINUE MODELS, OR CHANGE SPECIFICATIONS WITHOUT NOTICE OR INCURRING OBLIGATION.

4

3

2

1

DWG LDK-DT13SDCN\_224

Δ

B

A